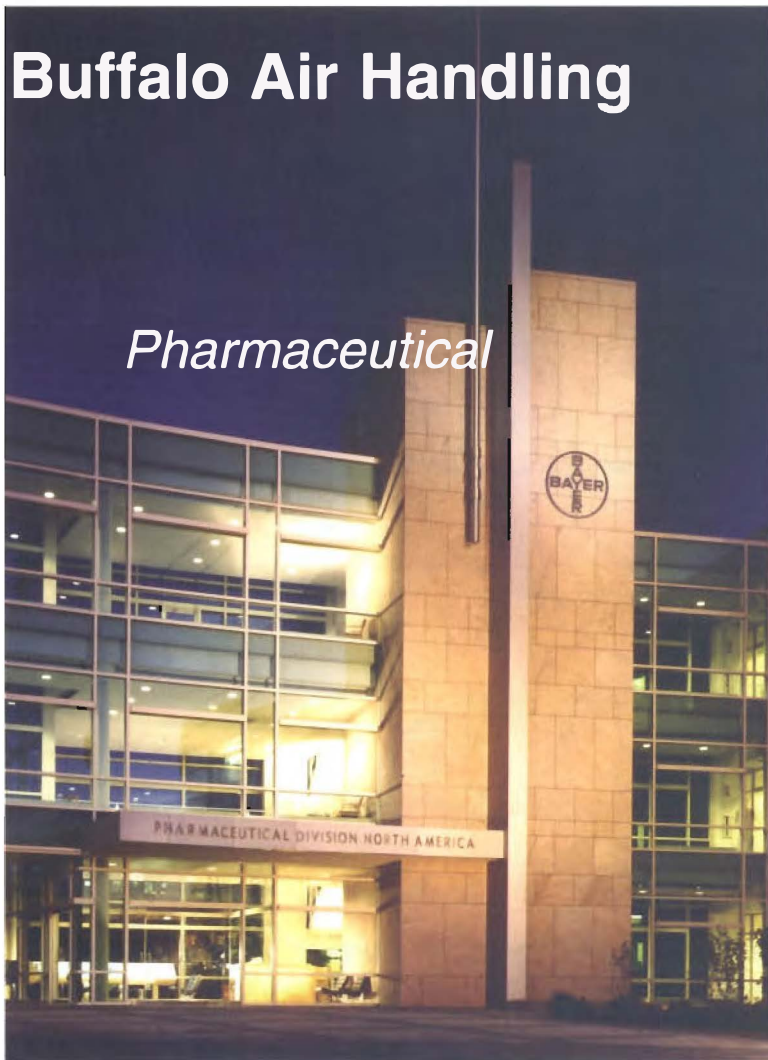


# Buffalo Air Handling

## Pharmaceutical



## Bayer Corporation Pharmaceutical Division

*West Haven, Connecticut*

### *Equipment:*

Buffalo Air Handling supplied five (5) air handling units totaling 200,000 CFM for the Bayer Corporation. The units have 4" double wall, thermal break construction with supply and return fans, heating and cooling coils, filters, dampers, humidifiers and sound attenuators.

### *Owner:*

Bayer Corporation

### *General Contractor:*

Gilbane Building Company

### *Project Engineers:*

Affiliated Engineers, Inc.

### *Mechanical Contractor:*

Tucker Mechanical

Pharmaceutical is one of nine divisions within the Bayer Corporation, all dedicated to "Changing the world with great care". The West Haven site specifically directs its research in the areas of cancer, diabetes, obesity and osteoporosis. Also, a new drug for Alzheimer sufferers is being manufactured at this facility. With its efforts, Bayer intends to capture a greater share of the global pharmaceutical market.

In Bayer's last expansion, Buffalo Air Handling was asked to provide air handling equipment that would meet the specific needs of Bayer. The units were low profile construction to satisfy space constraints at the facility. The units were designed with notches, such that when laid end to end on the site, they created an air handling unit over 180' long, which fits precisely over several air ducts on the underside of the unit.

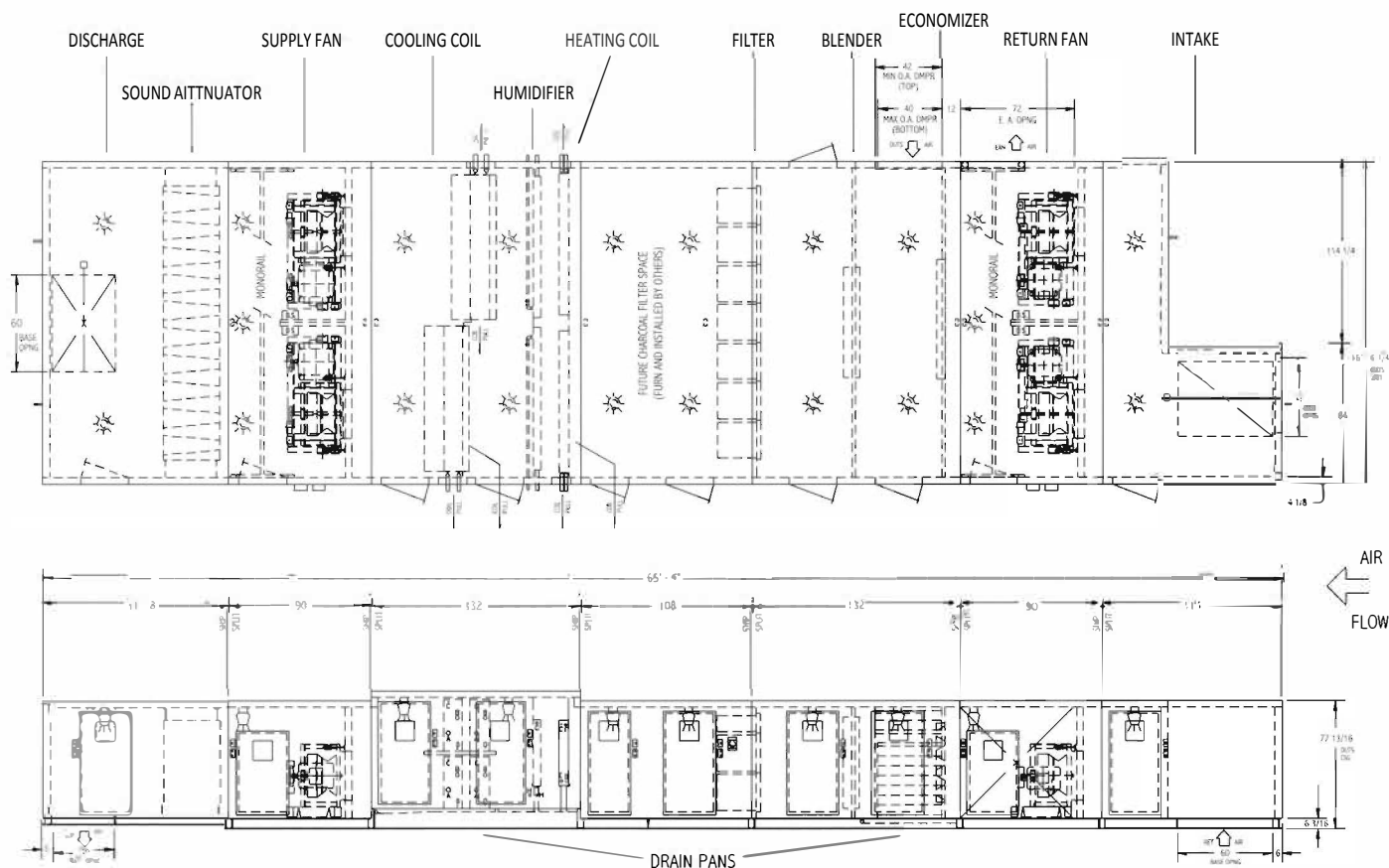
All the units passed stringent testing requirements in the factory and on site. Pressure and leakage testing were conducted to verify a maximum permissible leakage rate of 1 % at 10" static pressure water gauge.

**BUFFALO**  
**AIR HANDLING**

Sales Engineers in cities  
throughout North America.  
For the nearest office, call:

Telephone: (434) 946-7455  
Fax: (434) 946-7941

[www.buffaloair.com](http://www.buffaloair.com)



## Big Buffalo

### Sizes:

- (3) 35,000 CFM, 8" SP
- (1) 40,000 CFM, 9" SP
- (1) 55,000 CFM, 9" SP

### Construction:

- 4" double wall
- 3#/ft<sup>3</sup> density insulation
- Galvanized steel, 14 gauge outer, 16 gauge solid inner, 20 gauge perforated inner in fan sections
- Thermal break construction
- 6" structural steel channel base
- 12" structural steel channel base in coil section

- 10 gauge galvanized floor with non-skid paint
- 12 gauge 304 stainless steel drain pan
- 304 stainless steel coil racks for individual coil removal
- Coils designed for side or face removal

### Components:

- Class 3 plenum supply and Class 2 plenum return fans
- Monorails in fan section for fan wheel and motor removal
- Seismic spring isolators
- Premium efficient, ODP motors
- Nema 1 non-fused disconnects

- Aerofin CHP heating coils, aluminum fin, copper tube
- Aerofin CP cooling coils, aluminum fin, copper tube
- 30% efficient pre-filters
- 90% efficient final bag filters
- Blenders
- Panel humidifiers
- Sound attenuators
- Parallel and opposed blade dampers
- Access doors with double pane, wire reinforced deadlights and safety chains
- Marine lights, switches and receptacles
- 120V single point wiring