



Photography by: Mofle Photography, Green Bay, WI

Prairie Heart Institute at St. John's Hospital

Springfield, IL

Equipment:

Buffalo Air Handling supplied fourteen air handling units totaling 320,470 CFM. The units are 2" double-wall construction and include fans, heating, heat recovery and cooling coils, pre, final and gas phase filtration, dampers and humidifiers.

Owner:

Hospital Sisters Health System

Design Architect & Engineer:

Berners-Schober
Associates, Inc.

Construction Manager:

Evans Construction Co.

Mechanical Contractor:

E. L. Pruitt Co.

The Prairie Heart Institute (PHI) of St. John's Hospital is a 170,000 sq. ft. Combination In/Outpatient Cardiac Service Center.

The air handling units are located in the 2nd floor mechanical mezzanine space and in the 6th floor penthouse. Conditioned air is provided to the outpatient cardiac catheterization waiting and prep areas located directly below the after care centers at the 1st floor Rehabilitation and Life Style Center. The units also serve the surgery rooms on the 3rd floor, catheterization on the 4th, and diagnostic and consultation on the 5th, as well as administrative and physician offices throughout.

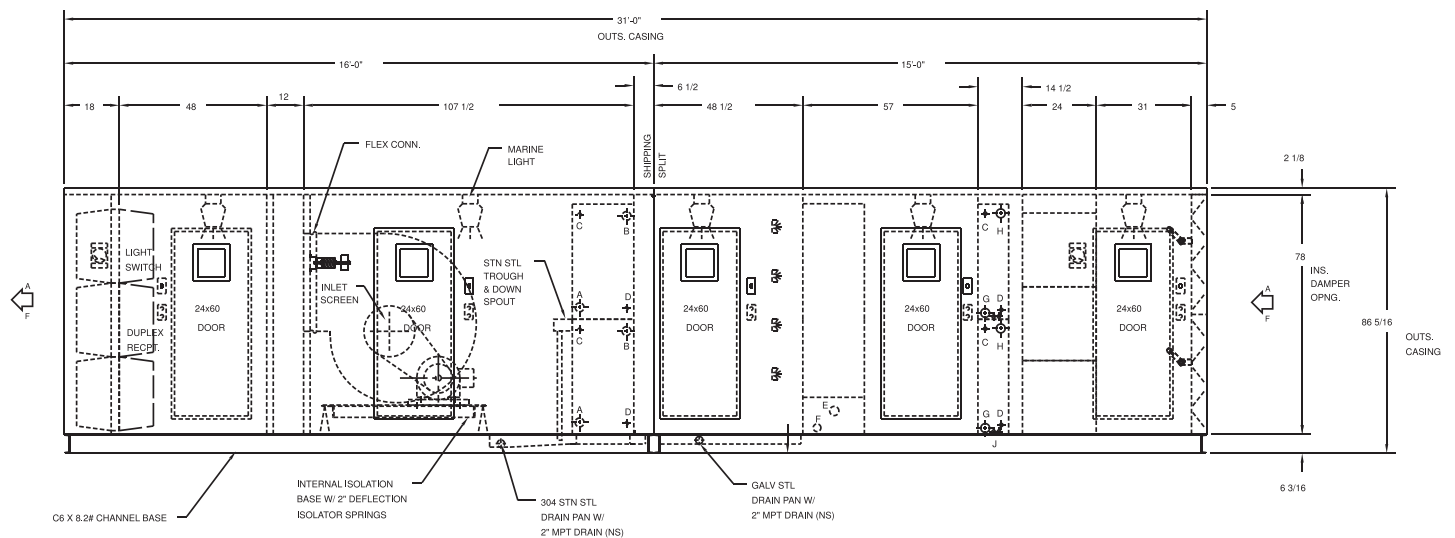
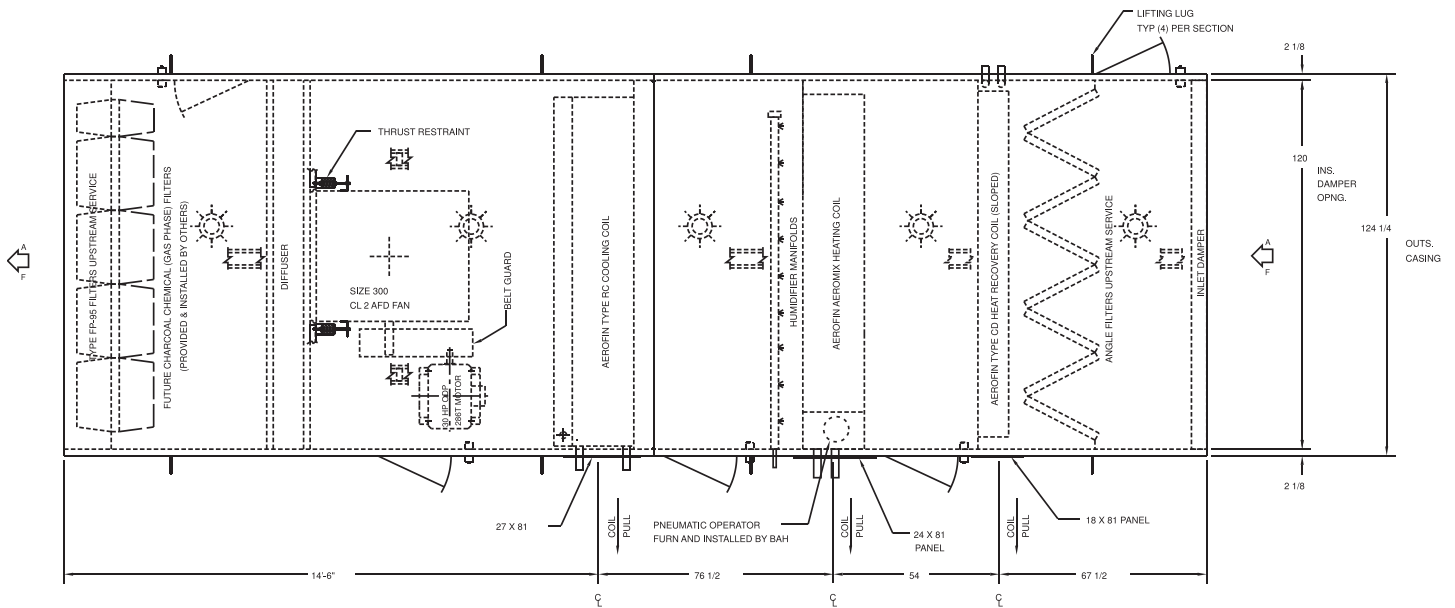
Space constraints required that some units be stacked to utilize the available floor space. The surgery room units are variable volume based on the occupancy in the room.

Buffalo Air Handling's experience in the hospital/healthcare market, familiarity with heat recovery, variable volume and custom design, and a reputation for long lasting, reliable equipment were reasons the owner, engineer and contractor selected Buffalo units.

Sales Engineers in cities
throughout North America.
For the nearest office, call:

Telephone: (434) 946-7455
Telefax: (434) 946-7941

www.buffaloair.com



Sizes:

- 3,000 - 39,100 CFM

Construction:

- 2" double-wall, G90 galvanized steel, 14 gauge outer, 20 gauge solid inner
- 3#/ft³ density insulation
- 6" structural steel channel base
- 10 gauge galvanized steel floor
- 12 gauge 304 stainless steel drain pan

Components:

- Class 1 and 2 DWDI centrifugal fans
- Premium efficient, open drip proof motors, suitable for VFD service
- Internal isolation bases with 2" deflection springs
- Full height, full width diffuser
- Aerofin CD (completely drainable) heat recovery coils, .025" copper tube, .010" aluminum fin
- Aerofin RC (removable header) cooling coils, .025" copper tube, .010" aluminum fin, 304 stainless steel casing
- Aeromix integral face and bypass vertical tube, steam heating coils
- 30% efficient pre-filters
- 95% efficient rigid final filters
- Gas phase filtration filters; activated carbon and potassium permanganate
- Steam grid humidifiers
- Opposed and parallel blade dampers
- Access doors
- Marine lights, switches and receptacles